


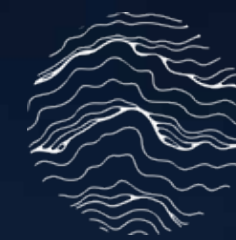


SITE ADDRESS: ONYX, Rd Number 1, Jay Prakash Nagar, Goregaon East, Mumbai, Maharashtra 400063

 @mehtagrouprealty  mehtagrouprealty  www.mehtagroup.net.in

 The Project ONYX is registered via MahaRERA registration no : P51800032011 and is available on the website : <http://maharera.mahaonline.gov.in>

Disclaimer :The plans, specifications, images and other details herein are only indicative and the Developer/Promoter reserves the right to change any or all of these in the interest of the development as per applicable rules and regulations. This printed material does not constitute an offer and or contract of any type between the Owner/Developer and the Recipient. Any prospective sale shall be governed by the terms and conditions of the Agreement for Sale to be entered into between the parties.



ONYX

GOREGOAN EAST

RARE IS
BEAUTIFUL

MAKING
LIVES
BEAUTIFUL
WITH RARE
CREATIONS.



stookimage

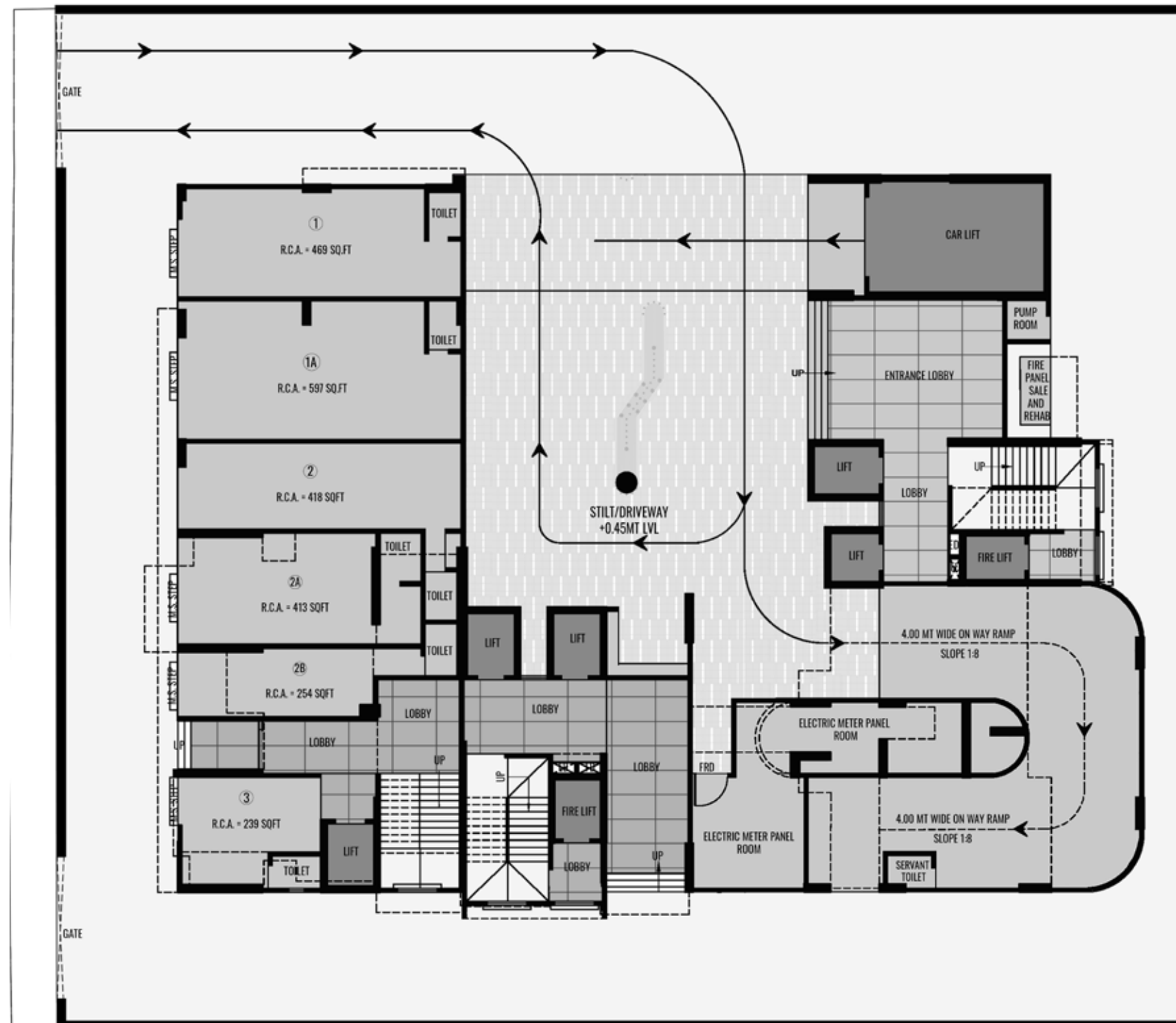
We believe in creating homes that you will be proud to own. With a forte in maintaining affordable prices without compromising on quality, we offer homes that are perfectly suited to your needs. We have over four decades of experience in Mumbai, Thane and beyond. Although ever-evolving, what has remained constant is our transparency and motto to put you first. We are Mehta Group.



LUXURY AND
HAPPINESS
IN EVERY
CORNER



stock image



GROUND FLOOR PLAN

THOUGHTFUL PLANNING AND EXECUTION

Return home in style every single day, as you're greeted by a 23ft wide, two-way gate at the entrance of Onyx. This leads up to the intentionally designed double-height foyer, which adds to the grandeur of the building and makes you feel proud to call Onyx your home. The ground floor also includes commercial spaces that are facing the road, which come with their own exclusive lobby. This ensures that there is a clear separation of the residential and commercial spaces, and maintains the privacy of both.



LIFE BECOMES BEAUTIFUL WHEN IT'S FILLED WITH MEMORIES.

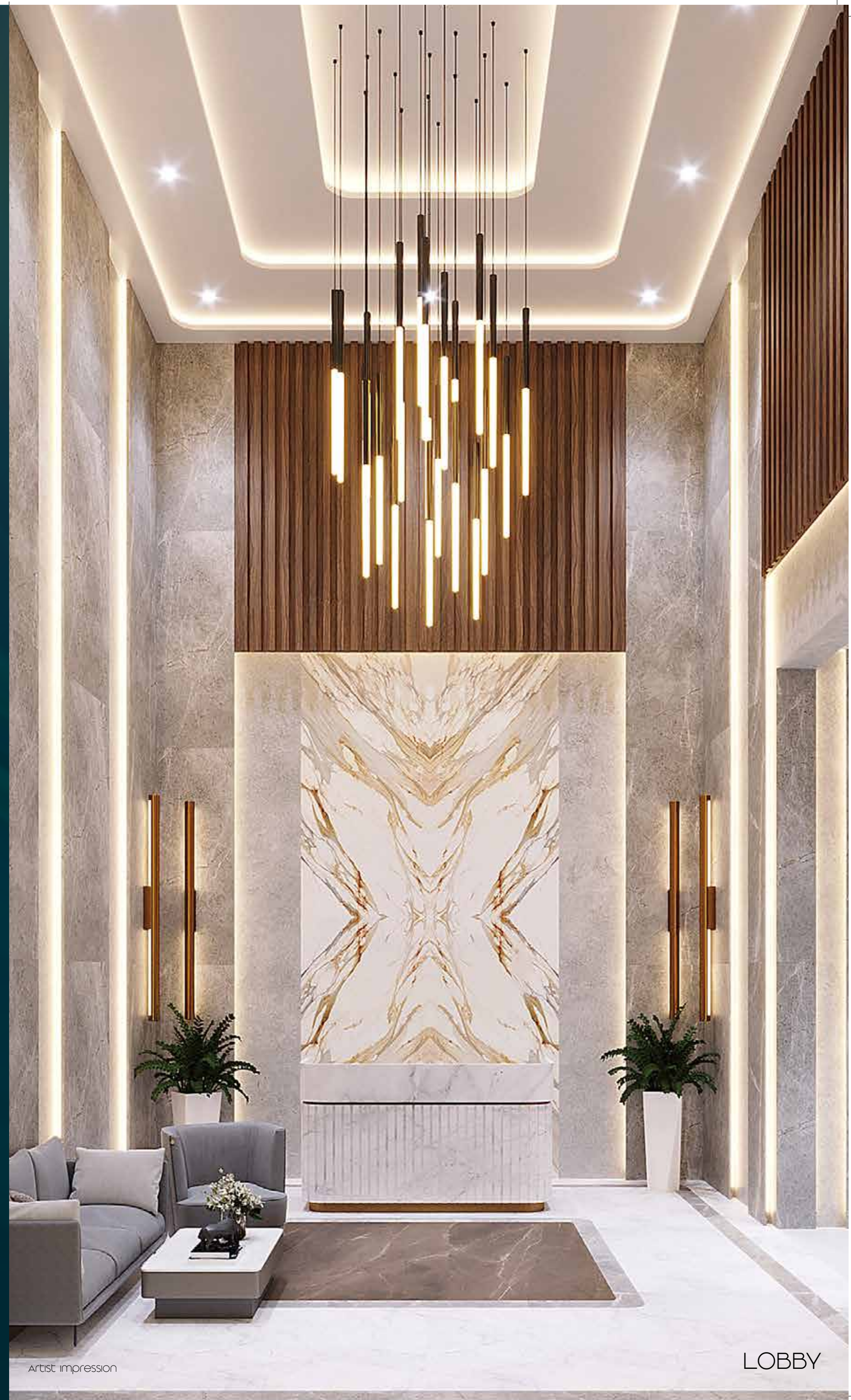
With over 40 years of association with the building, Onyx is a project that is special and close to our hearts. Thus, maintaining the spirit of community, which has always been the soul of this place, was extremely essential to us. This has resulted in the creation of a modern construction nestled in the lap of luxury, yet rooted in tradition, making it a true representation of everything that we at Mehta Group stand for. Onyx is not just your new house it is your home.

RETURN HOME IN OPULENCE AND STYLE



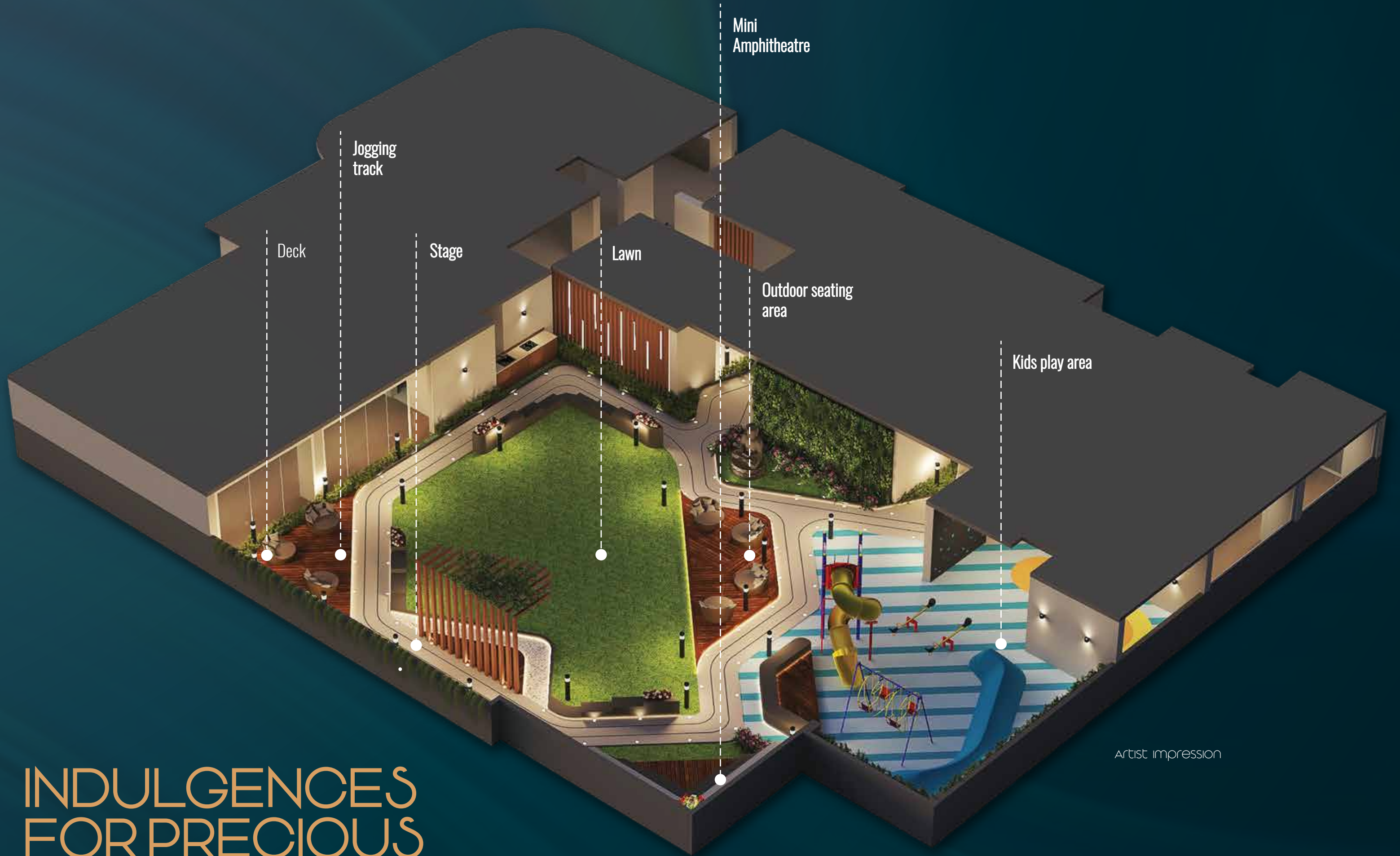
FOYER: On entering the building, you will find yourself being greeted by an expansive, double-height foyer. Standing at a height of 28ft, the foyer is the building's main pick-up/drop-off point. Well-lit and grand, Onyx is designed to create extravagance.

LOBBY: The Onyx lobby is a perfect blend of modern opulence and understated tranquility. Complete with high-quality finishes and carefully chosen materials, the lobby allows you to boast about the building that you will be glad to call home. Carefully designed for not just luxury but also convenience, the lobby includes a comfortable seating section for you and your guests to lounge in. In addition, any one of its 2 fast lifts can swiftly take you up to the comfort of your home.





AN ICONIC
LANDMARK



Jogging track

Deck

Stage

Lawn

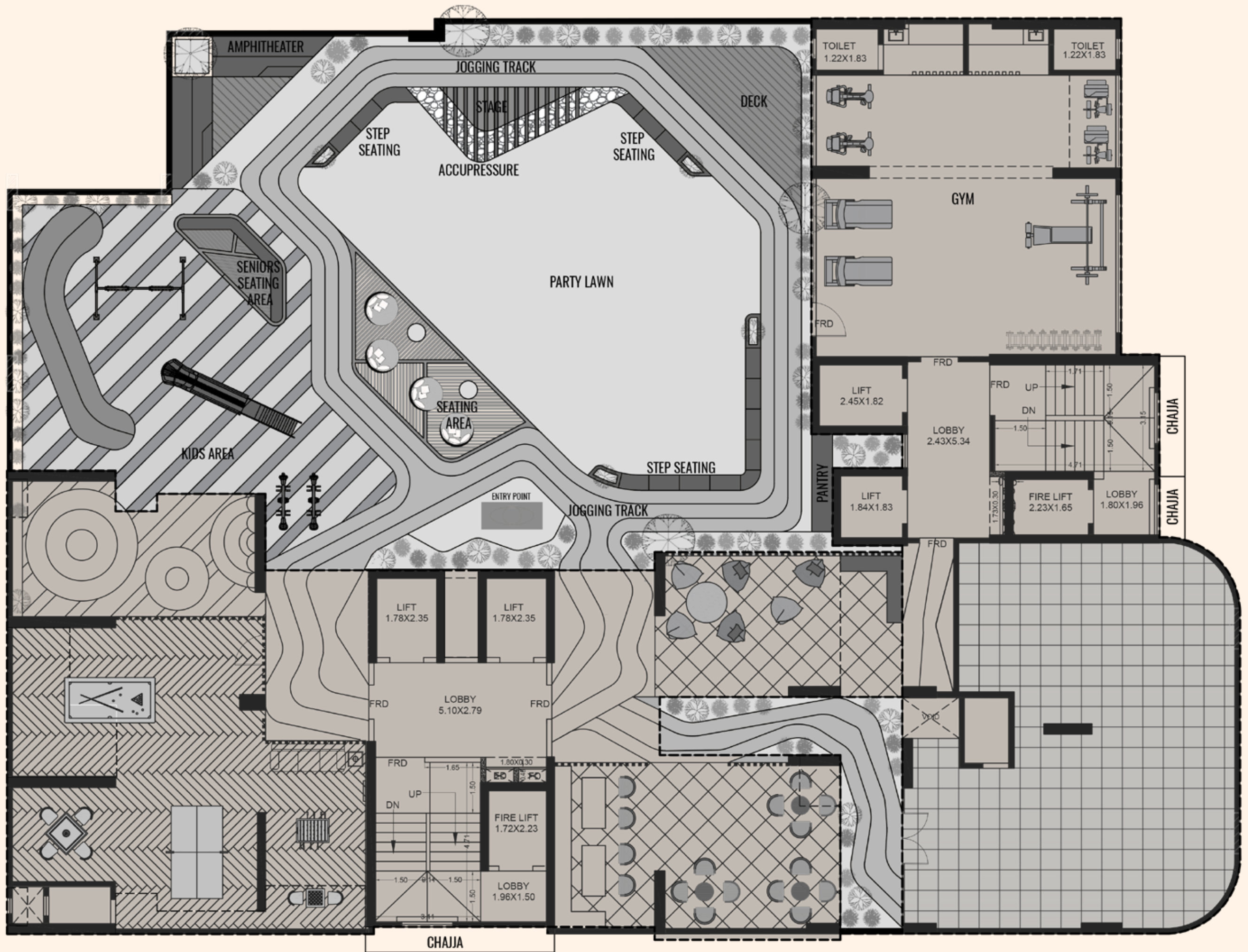
Mini Amphitheatre

Outdoor seating area

Kids play area

Artist impression

INDULGENCES
FOR PRECIOUS
FAMILY TIME



SKY PODIUM PLAN



BUILDING AMENITIES, ADDING MORE TO YOUR HOME

SKY PODIUM



Deck



Jogging Track



Stage



Lawn



Outdoor Seating Area



Mini Amphitheater



Kids' Play Area

ROOFTOP



Yoga Garden



Cafe



Walkway



Aromatic Garden

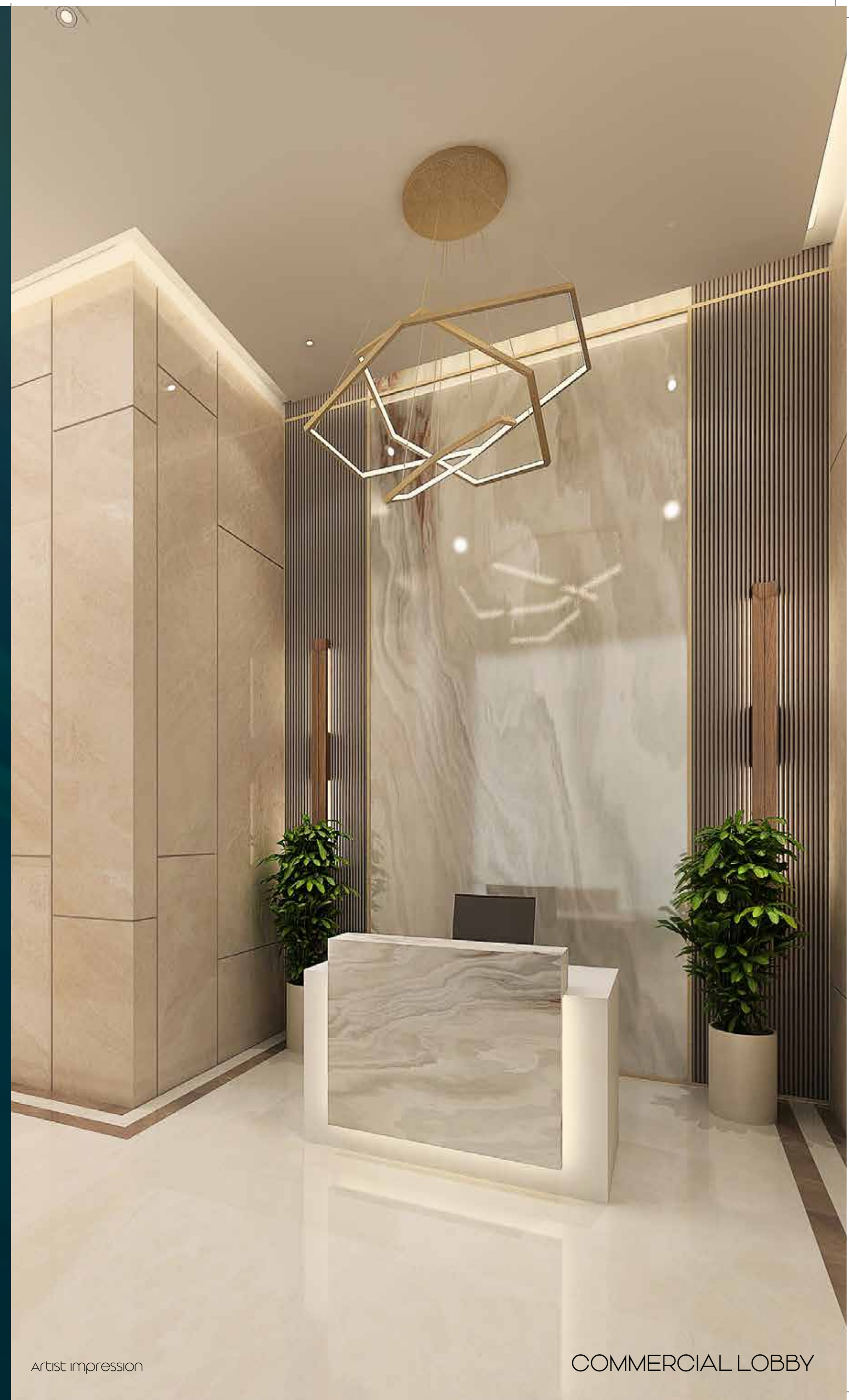



ONYX
A RARE LIFE

ENJOY THE
PERFECT BLEND
OF LUXURY AND
COMMUNITY

Artist Impression

A GRAND
FIRST
IMPRESSION.

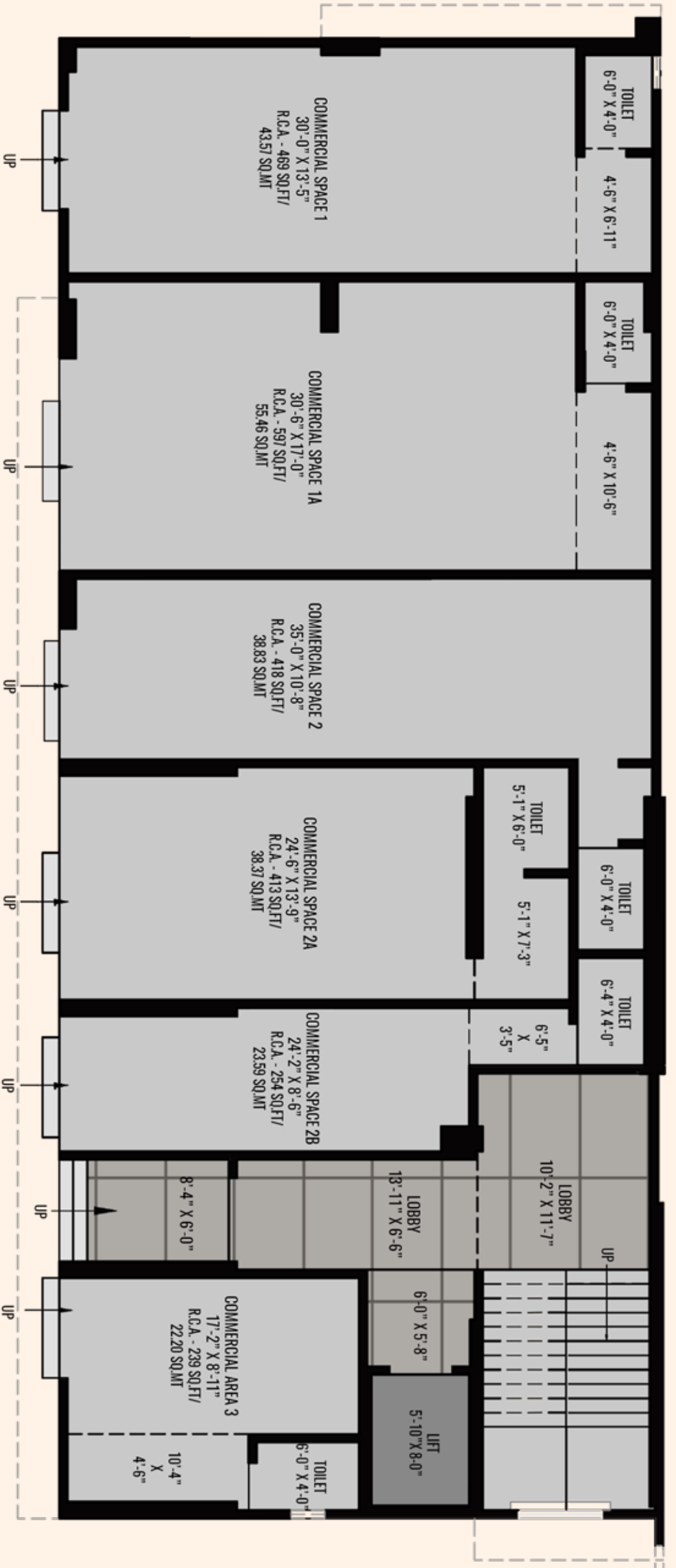


Artist impression

COMMERCIAL LOBBY



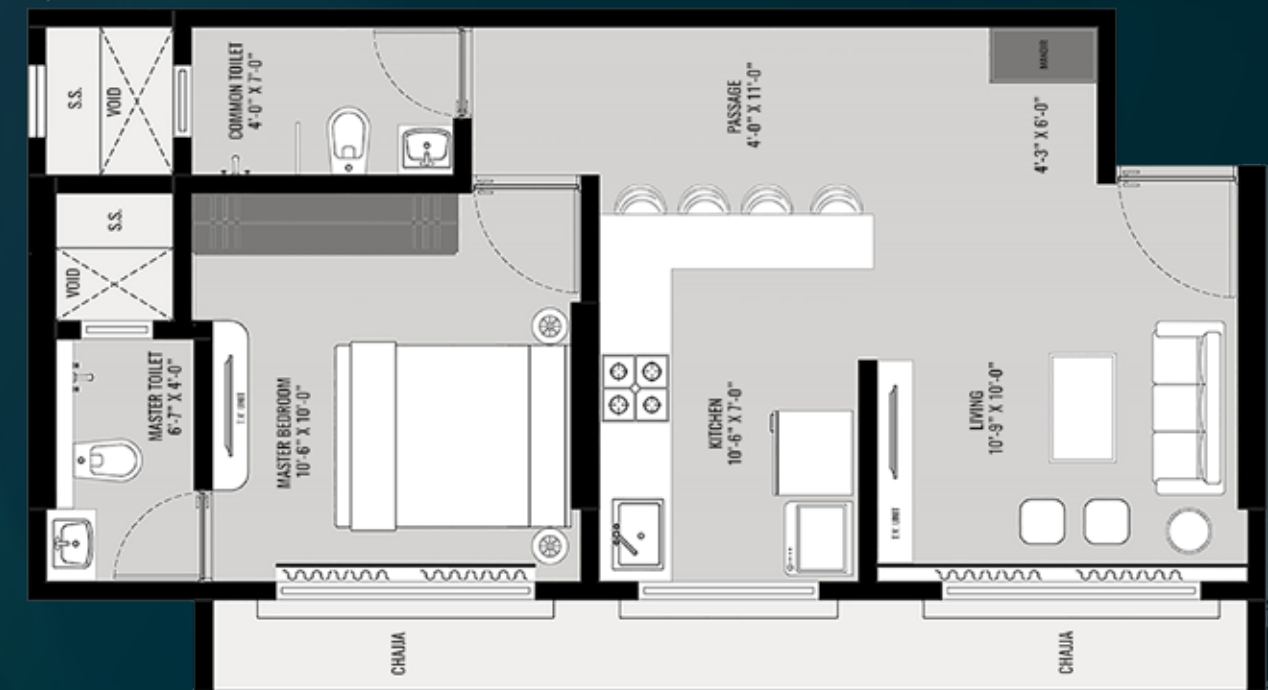
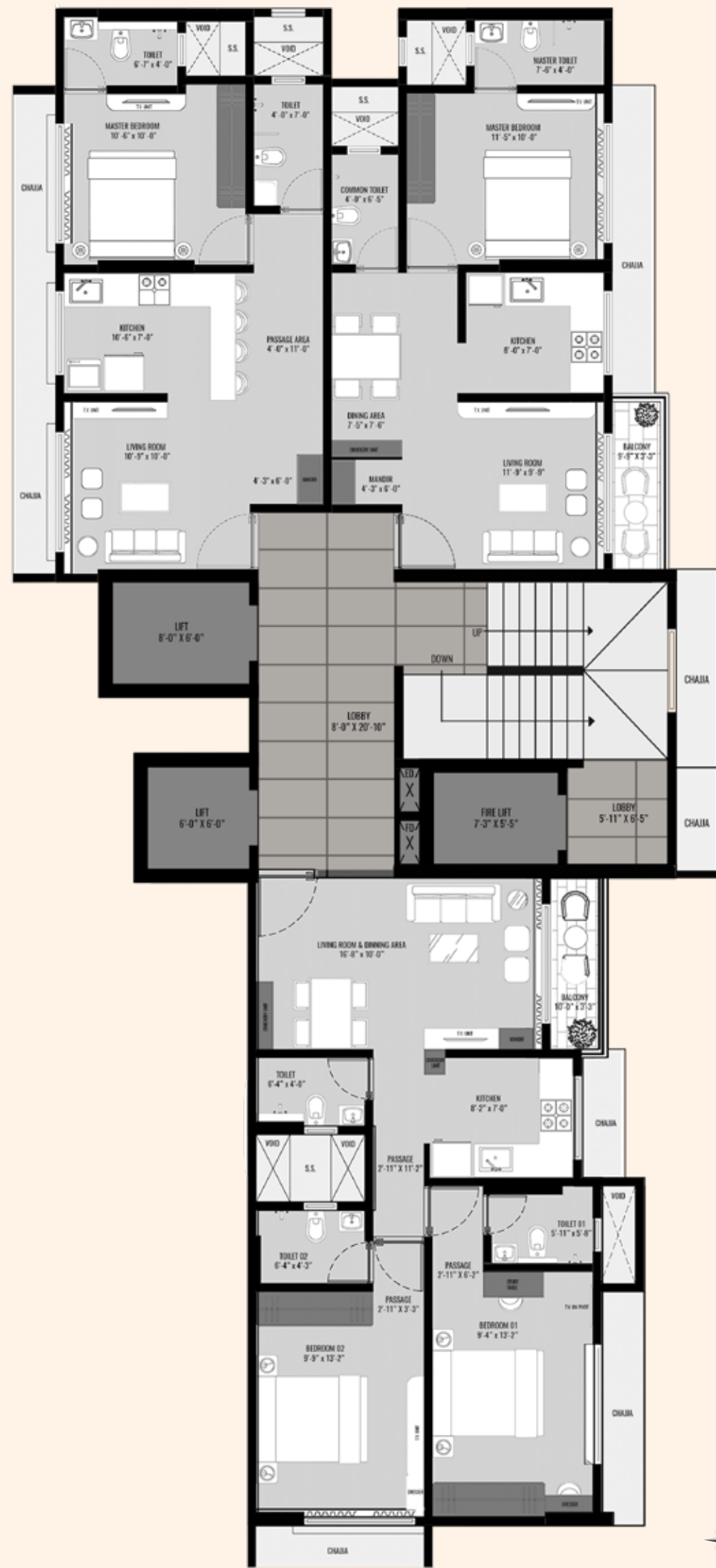
FRIST FLOOR COMMERCIAL PLAN



GROUND FLOOR COMMERCIAL PLAN



TYPICAL FLOOR PLAN



1BHK|R.C.A 435 SQ.FT



2 BHK WITH DECK|R.C.A 695 SQ.FT

- 1BHK | R.C.A - 435 SQ.FT
- 1BHK WITH DECK | R.C.A - 477.4 SQ.FT
- 2BHK WITH DECK | R.C.A - 695 SQ.FT

ENJOY MODERN
LIVING BRIMMING
WITH BEAUTY
AND LUXURY



2BHK LIVING ROOM



1BHK LIVING ROOM



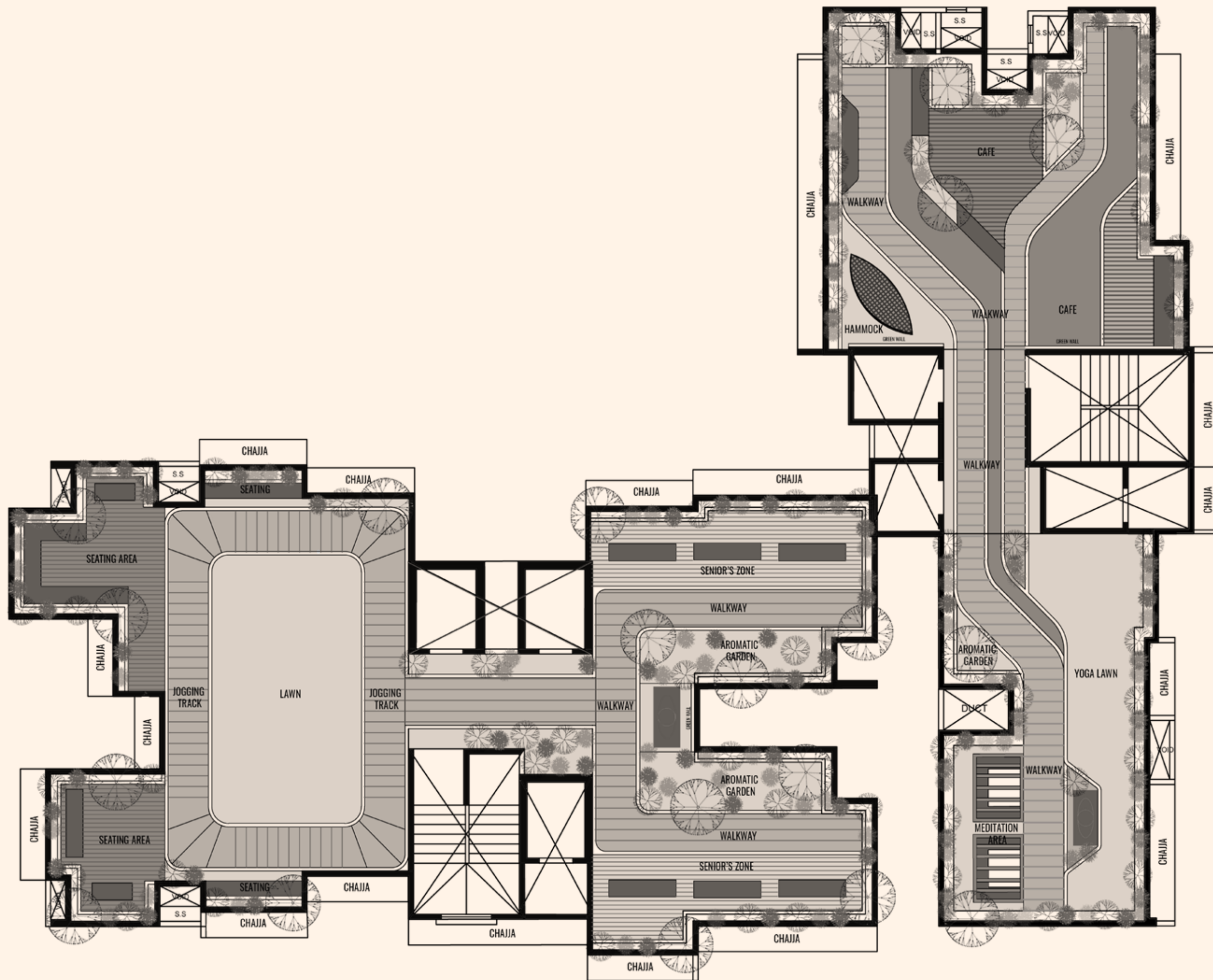
1BHK KITCHEN



2BHK MASTER BEDROOM

TREAT
YOURSELF TO
SPECTACULAR
VIEWS





ROOFTOP PLAN



FINE LIVING GETS
EVEN MORE
OPULENT WITH
RARE LUXURIES





A LOCALITY WITH COMFORT AND CONVENIENCE.

ROAD CONNECTIVITY:

Malad - 13 mins
 Andheri - 22 mins
 Kandivali - 18 mins
 International Airport - 20mins
 Weh - 5 mins
 SV road - 10 mins
 Link Road - 15 mins
 Ram mandir - 10mins

CINEMAS:

Movie time - 5 min
 Mukta A2 cinemas - 8 min

SCHOOL AND COLLEGES:

Gokuldharm High School - 15 min
 Yashodhan High School - 15 min
 Ryan International School - 20 min

MALLS AND SUPERMARKETS:

Nesco Exhibition Centre
 -10 mins
 Inorbit mall - 15 min
 Hyper city mall - 15 min
 Oberoi mall - 10 min
 Hub mall - 5 min

HOSPITALS:

Sabnis Hospital - 8 min
 Vishwa Kripa Hospital - 10 min

TRANSIT STATIONS:

Goregaon WEH metro station - 10 min
 Ram Mandir station - 11 min

COME JOIN OUR FAMILY.



ONYX

Rare Life

OUR PROMISE

GETTING TO KNOW EACH OF OUR CUSTOMERS PERSONALLY

We want to treat people as we wish to be treated ourselves. We listen to our customers and are committed to understanding their needs, so we can delight them with our service.

TAKING PERSONAL RESPONSIBILITY FOR OUR CUSTOMERS' NEEDS

Every one of us at Mehta Group is personally responsible for fulfilling the needs of our customers. If a customer contacts Mehta Group, the person who receives the contact will take responsibility for seeing that their questions are answered.

CARING ABOUT OUR NEIGHBOURS

We take responsibility to create homes that enhance neighbourhoods for our customers and their neighbours to enjoy.

CARING ABOUT THE LEGACY WE LEAVE BEHIND

When our customers buy a Mehta Group home, they are contributing to a story that will grow and create lasting value, both for themselves and for the community around them. We are conscious of the legacy we leave behind and we want to be known for creating outstanding places to live in.

COLLABORATIONS



Liasoning & Planning Architects



M.E.P. Consultants



Interior Design Architects